

2011 John Reynolds Western Regional Tournament Check List

Items to be emailed to president.wcsa@gmail.com by Oct 28th

1. Club President cell phone # and email address
2. Coach's cell phone # and email address
3. Another Club Executive Members cell phone and email address

Items to check into Directors Tent 1 hour prior to first game

1. Notarized NIRSA Eligibility Waiver
*Please Note this takes at least one week
2. Master Roster Sheet
3. Contact info sheet

* If your first game is at Cuesta, please check in with Field Marshall 1 hour to your first game

Items to have 15 minutes prior to each game:

1. Game Roster sheet
2. Refs will check ID, no ID no play

2011 John Reynolds Western Regional Tournament



| Date | Day | Time | Field | Home | Score | Away | Score |
|-----------|-----|----------|------------|--------------|-------|--------------|-------|
| 29-Oct-11 | SAT | 8:30 AM | Cal Poly 1 | Arizona | | Cal Poly Slo | |
| 29-Oct-11 | SAT | 8:30 AM | Cal Poly 2 | UCSB | | Long Beach | |
| 29-Oct-11 | SAT | 8:30 AM | Cal Poly 3 | SDSU | | SLCC | |
| 29-Oct-11 | SAT | 8:30 AM | Cuesta 1 | UC Davis | | UCSD | |
| 29-Oct-11 | SAT | 8:30 AM | Cuesta 2 | SDSU | | Cuesta | |
| 29-Oct-11 | SAT | 10:30 AM | Cal Poly 1 | Cal Poly Slo | | CSUN | |
| 29-Oct-11 | SAT | 10:30 AM | Cal Poly 2 | USC | | USD | |
| 29-Oct-11 | SAT | 10:30 AM | Cal Poly 3 | UCSB | | UCI | |
| 29-Oct-11 | SAT | 10:30 AM | Cuesta 1 | | | | |
| 29-Oct-11 | SAT | 10:30 AM | Cuesta 2 | | | | |
| 29-Oct-11 | SAT | 12:30 PM | Cal Poly 1 | Cal Poly Slo | | USD | |
| 29-Oct-11 | SAT | 12:30 PM | Cal Poly 2 | Long Beach | | Cal | |
| 29-Oct-11 | SAT | 12:30 PM | Cal Poly 3 | SLCC | | UCLA | |
| 29-Oct-11 | SAT | 12:30 PM | Cuesta 1 | | | | |
| 29-Oct-11 | SAT | 12:30 PM | Cuesta 2 | | | | |
| 29-Oct-11 | SAT | 2:30 PM | Cal Poly 1 | CSUN | | UCSD | |
| 29-Oct-11 | SAT | 2:30 PM | Cal Poly 2 | USD | | UC Davis | |
| 29-Oct-11 | SAT | 2:30 PM | Cal Poly 3 | UCI | | Cal | |
| 29-Oct-11 | SAT | 2:30 PM | Cuesta 1 | UCSD | | ASU | |
| 29-Oct-11 | SAT | 2:30 PM | Cuesta 2 | Cuesta | | UCLA | |
| 29-Oct-11 | SAT | 4:30 PM | Cal Poly 1 | USD | | Arizona | |
| 29-Oct-11 | SAT | 4:30 PM | Cal Poly 2 | Cal | | UCSB | |
| 29-Oct-11 | SAT | 4:30 PM | Cal Poly 3 | UCLA | | SDSU | |
| 29-Oct-11 | SAT | 6:30 PM | Cal Poly 1 | UCSD | | Cal Poly Slo | |
| 29-Oct-11 | SAT | 6:30 PM | Cal Poly 2 | UC Davis | | USC | |
| 29-Oct-11 | SAT | 6:30 PM | Cal Poly 3 | Cal | | UCSB | |
| 29-Oct-11 | SAT | 8:30 PM | Cal Poly 2 | ASU | | UC Davis | |
| 29-Oct-11 | SAT | 8:30 PM | Cal Poly 3 | UCLA | | SDSU | |

2010 John Renyold's Western Regional Tournament

| Date | Day | Time | Field | Home | Score | Away | Score |
|-----------|-----|----------|------------|---------------|-------|---------------|-------|
| 30-Oct-11 | SUN | 8:30 AM | Cal Poly 1 | 1st Group A | | 2nd Group D | QF1 |
| 30-Oct-11 | SUN | 8:30 AM | Cal Poly 2 | 1st Group B | | 2nd Group C | QF2 |
| 30-Oct-11 | SUN | 8:30 AM | Cal Poly 3 | 1st Group C | | 2nd Group B | QF3 |
| 30-Oct-11 | SUN | 8:30 AM | Cuesta 1 | 1st Group D | | 2nd Group A | QF4 |
| 30-Oct-11 | SUN | 10:30 AM | Cal Poly 1 | Men's Group A | | Men's Group B | MSF |
| 30-Oct-11 | SUN | 10:30 AM | Cal Poly 2 | Men's Group C | | Men's Group D | MSF |

| Championships | Day | Time | Field | Home | Score | Away | Score |
|---------------|-----|----------|------------|-------------|-------|-------------|-------|
| 30-Oct-11 | SUN | 12:30 PM | Cal Poly 2 | QF1 winner | | QF3 winner | WSF |
| 30-Oct-11 | SUN | 12:30PM | Cal Poly 3 | QF2 winner | | QF4 winner | WSF |
| 30-Oct-11 | SUN | 2:30 PM | Cal Poly 3 | Men's Final | | Men's Final | MF |

All Games - 40 Minute Halves



Women Games

2011 John Reynolds Western Regional Tournament

| Women's Tournament | Game 1 | | | Game 2 | | | Game 3 | | | Total | | |
|--------------------|--------|-----|--------|--------|-----|--------|--------|-----|--------|-------|----|-----|
| | Score | Opp | Points | Score | Opp | Points | Score | Opp | Points | GF | GA | PTS |
| Group A | | | | | | | | | | | | |
| Arizona | | | | | | | | | | | | |
| USD | | | | | | | | | | | | |
| Cal Poly Slo | | | | | | | | | | | | |

| Women's Tournament | Game 1 | | | Game 2 | | | Game 3 | | | Total | | |
|------------------------|--------|-----|--------|--------|-----|--------|--------|-----|--------|-------|----|-----|
| | Score | Opp | Points | Score | Opp | Points | Score | Opp | Points | GF | GA | PTS |
| Group B | | | | | | | | | | | | |
| UCSB | | | | | | | | | | | | |
| Cal | | | | | | | | | | | | |
| Long Beach St/Chico St | | | | | | | | | | | | |

| Women's Tournament | Game 1 | | | Game 2 | | | Game 3 | | | Total | | |
|--------------------|--------|-----|--------|--------|-----|--------|--------|-----|--------|-------|----|-----|
| | Score | Opp | Points | Score | Opp | Points | Score | Opp | Points | GF | GA | PTS |
| Group C | | | | | | | | | | | | |
| SDSU | | | | | | | | | | | | |
| UCLA | | | | | | | | | | | | |
| SICC | | | | | | | | | | | | |

| Women's Tournament | Game 1 | | | Game 2 | | | Game 3 | | | Total | | |
|--------------------|--------|-----|--------|--------|-----|--------|--------|-----|--------|-------|----|-----|
| | Score | Opp | Points | Score | Opp | Points | Score | Opp | Points | GF | GA | PTS |
| Group D | | | | | | | | | | | | |
| UC Davis | | | | | | | | | | | | |
| ASU | | | | | | | | | | | | |
| UCSD | | | | | | | | | | | | |

2011 John Reynolds's Western Regional Tournament

2011 John Reynolds Western Regional Tournament

Contact List

Team: _____

Coach: _____

Coach Cell Phone: _____

Team Representative: _____

Team Rep Cell Phone: _____

Hotel (If traveling): _____

Hotel Phone: _____

WEST COAST SOCCER ASSOCIATION OFFICIAL GAME REPORT



| | |
|-------------------|--|
| DATE | |
| START TIME | |

| | |
|-----------------|--|
| DIVISION | |
| FIELD | |

HOME TEAM

| | | |
|--|-----------------|--|
| | TEAM | |
| | OPPONENT | |

| |
|--|
| FINAL SCORE |
| <input style="width: 80%; height: 100%;" type="text"/> |
| <input style="width: 80%; height: 100%;" type="text"/> |

| | |
|----------------|-------------------|
| CAPTAIN | JERSEY NO. |
|----------------|-------------------|

| | |
|----------------|--|
| MANAGER | |
|----------------|--|

| NO. | PLAYER'S FULL NAME (PLEASE PRINT) | JERSEY NO. | I.D. NO. | PLAYER'S SIGNATURE | REFEREE'S USE |
|-----|-----------------------------------|------------|----------|--------------------|---------------|
| 1 | | | | | |
| 2 | | | | | |
| 3 | | | | | |
| 4 | | | | | |
| 5 | | | | | |
| 6 | | | | | |
| 7 | | | | | |
| 8 | | | | | |
| 9 | | | | | |
| 10 | | | | | |
| 11 | | | | | |
| 12 | | | | | |
| 13 | | | | | |
| 14 | | | | | |
| 15 | | | | | |
| 16 | | | | | |
| 17 | | | | | |
| 18 | | | | | |
| 19 | | | | | |
| 20 | | | | | |
| 21 | | | | | |
| 22 | | | | | |
| 23 | | | | | |
| 24 | | | | | |
| 25 | | | | | |

| | |
|---|---|
| FIRST AND LAST NAME (PLEASE PRINT) | REFEREE'S SIGNATURE & PHONE NUMBER |
| REFEREE #1 | |
| ASST. REFEREE #1 | |
| ASST. REFEREE #2 | |

| | | | |
|----------------------------|---------------------------------|---|---------------------------------|
| S C O R E D | I N J U R E D | C A U T I O N E D | E J E C T E D |
|----------------------------|---------------------------------|---|---------------------------------|

*** EACH ASSISTANT REFEREE MUST CHECK IN EACH PLAYERS STUDENT ID PRIOR TO KICK OFF, NO ID NO PLAY**
**** A SEPARATE MISCONDUCT REPORT MUST BE SUBMITTED WITH THE GAME REPORT**
REFEREE'S MAY REQUIRE ANY PLAYER TO SIGN THE OFFICIAL GAME REPORT

2011 NIRSA NCCS National Soccer Championships

Rules of Play

The championships will be governed by NCAA rules with the following modifications:

DURATION OF GAMES AND HALFTIMES:

Running time will be used throughout the entire tournament. All games up to the semifinals will consist of 40 minute halves separated by a seven minute halftime. Semifinal and final competition will have 40-minute halves separated by a ten minute halftime. Pool play games that are tied at the end of regulation time will remain tied. Playoff games that are tied will go into overtime play. Overtime play will consist of one 15 minute, sudden victory, overtime period. If still tied at the conclusion of the overtime period, penalty kicks will be taken to determine a winner. Please note that the tournament format and game length may change due to a lower number of entries in that division.

GAME CHECK-IN CONDUCT:

At least fifteen minutes prior to the start of each scheduled game, the Field Marshall will check the teams in for play. Each player must have a picture ID that must match to the team's player roster. The Field Marshall's are there to assist you with anything you might need and to handle the administrative concerns of the match. They do not have any authority over any decision made by the referee. Immediately after the match the Field Marshall will make sure the match card is signed by each team representative and taken to the tournament headquarters. A team who fails to properly check in with the Field Marshall will forfeit that game.

FORFEITURES:

Teams failing to check-in (15) minutes prior to their scheduled kick-off time or failing to report ready to play within (5) minutes of scheduled kick-off time may forfeit their match. All teams must have a minimum of (7) players present to start the match. Teams who have forfeited may continue on in the tournament.

PLAYERS' EQUIPMENT:

All players are required to wear shin guards under socks. No jewelry may be worn in competition, except medical alert or religious necklaces (taped to chest) Players shall wear approved footwear (no center cleats). All players must wear numbered (minimum 6" on back of jersey) uniforms with no duplicated numbers on a team. NO unpadded hard casts permitted. If player has a soft cast, must have a doctor's release and approval from the referee to play. NO knee braces made of hard, unyielding material are permitted, unless hinges are covered on all sides with approved padding, and all its edges are overlapped. Players not in compliance will be CAUTIONED (yellow carded) and sent off the field until the changes are made and the requirement is met.

SUBSTITUTIONS:

Substitutions are allowed during goal kicks or corner kicks by either team, for an injured player (one for one), for a yellow card (one for one) although not mandatory, and after a goal has been scored. Substitutions by the team with possession of the ball shall be permitted prior to a restart by a throw-in. If the team in possession chooses to substitute, the team not in possession may substitute as well. If the team in possession chooses not to substitute, the team not in possession may not substitute either. Substitutes entering before goal kicks, corner kicks or throw-in's must wait at the half-way line prior to the ball going out of play, so that a team may not stall by sending a substitute in after the ball is already out of play.

COACHING

All Coaches have total responsibility for the conduct of their players, substitutes, friends and spectators at all times.

Coaching from the sidelines (giving direction to one's own team on points of strategy and position) is permitted, provided:

- No mechanical devices are used;
- The tone of the voice is instructive and not derogatory;
- Each coach or substitute remains within 10 yards on their team bench side of the halfway line;
- No coach, substitute, or spectator makes derogatory remarks or gestures to the referees, other coaches, players, substitutes, or spectators;
- No coach, substitute, or spectator uses profanity or incites, in any manner, disruptive behavior.

CAUTIONS AND EJECTIONS:

A player or coach receiving two cautions (yellow cards) in a single game is considered to have been given an Ejection (red card) for the purposes of awarding points for the Tournament competition. A player who has been ejected (sent off), will not be replaced. A player or coach who has been ejected will not return for that game and will not be allowed to participate in the next scheduled game. A player or coach who is ejected may be removed for more than one game, following the game when the ejection occurred, depending on the severity of the infraction. For the purpose of this Tournament a coach can be carded. A team will be disqualified from the Tournament if any player or coach fails to comply

with the provisions of this section.

Any player that receives three yellow cards during the course of the tournament will be ineligible for the team's next game.

SUSPENDED AND TERMINATED GAMES:

If in the opinion of tournament officials a game must be suspended (for reason); the game may be resumed, but is subject to being ended not less than five (5) minutes prior to the scheduled start of the next game. If in the opinion of tournament officials, a game must be terminated for misconduct of players, bench coaches, or spectators, the offending team could be suspended from further play and forfeits that game and all remaining games. All previous points earned remain as played. Additionally, the sponsoring University will be contacted as appropriate.

If a game is terminated due to problems associated with the fields, including lighting for a night game, or due to the serious injury of a player (see the next section entitled "INJURY") the resumption of play for that game will be at the discretion of the tournament officials. Tournament officials may at their option conclude the game, require completion of the game or utilize penalty kicks to determine the winner of the game depending upon the circumstance and taking into account the potential effect of the game results on the standings of the teams.

INJURY:

Delays of the game will only be allowed for an injury requiring professional medical attention and the inability to remove the injured player from the field until and while the medical attention is being provided to the player. The delay will result in appropriate time being added to the full game time, based on the judgment of the referee. Otherwise, each game will be played with a running clock and no suspension of the clock time. However, all preliminary games will be terminated not less than five (5) minutes prior to the scheduled start of the next game. The failure to complete any game due to a serious injury requiring suspension of the game play shall be controlled by the preceding section," SUSPENDED AND TERMINATED GAMES."

DETERMINING WINNERS:

Teams will be awarded points on the following basis:

Three (3) points for each Win

One (1) points for each Tie

Zero (0) points for each Loss

In the event of a tie in points at the end of pool play, the teams to advance will be determined as follows:

1. The winner in head to head competition.
2. High point differential (goals scored minus goals allowed)
 - Maximum of 5 points from any one match
3. Most goals for.
4. Fewest goals against.
5. Most total wins.
6. Most shut outs.
7. If a tie still exists after steps 1 through 5, NCAA Penalty Kick procedures will be taken fifteen (15) minutes prior to the scheduled start of the appropriate Quarterfinal or Semifinal game.
8. If a three-way tie exists within a bracket after steps 1 through 5, a three-way coin flip will be conducted. The teams that tie in the coin flip will compete in NCAA Penalty Kicks to eliminate one team prior to proceeding to NCAA Penalty Kicks with the third team. The coin flip and time of the NCAA Penalty Kicks will be determined at the fields.

HOME TEAM:

The Home Team will be designated on the game schedule with an (HT). The Home Team will wear light jerseys. The home team will use the team bench on the North or West side of the scorer's table.

PROTESTS:

Only protests of eligibility and misapplication of the Rules of the Game will be considered. **PROTESTS OF JUDGMENT CALLS BY THE REFEREE WILL NOT BE ACCEPTED!**

To be valid and eligible for consideration, each protest:

- 1) Must be verbally lodged with the referee and with the opposing coach at the game site before entering the field of play or before leaving the game site.
- 2) The Tournament Director (Valerie McCutchan) must be verbally notified of the intent to lodge a protest within 30 minutes of the end of the match or decision being protested.
- 3) Must be filed with the Tournament Director (Valerie McCutchan) within 1 hour after the completion of the game being

protested and include:

a) Legible written copy of the protest, which must include full particulars of the grounds on which the protest is lodged

b) Legible written copy of any information to be presented by witnesses.

The Tournament Appeals Committee (tournament director, co-directors of competition, director of officials and NCCS committee member) will meet in closed session within a reasonable time after the receipt of the protest. If any documentation or "proof" is provided, it will be the sole discretion of the Committee on how to view/consider the proof/documentation.

The decision of The Tournament Appeals Committee will be considered final and not subject to further review.

The Tournament Appeals Committee reserves the right to adjust the schedule when the formal Protest is received.

A game upon which Protest is upheld will be replayed at the earliest possible date. The date, time and location of the match will be determined by the Tournament Appeals Committee.

Any sanctions levied by the Tournament Appeals Committee can only be effective at the championships. Recommended sanctions that would apply to future tournament(s) must be referred to the NCCS Committee – Standards of Competition for review and decision.

INCLEMENT WEATHER OR ACT OF GOD:

In the event of inclement weather, or act of God that occurs once the games have begun, winners will be decided based on points earned up to that point, with any tie breakers being determined using the protocol outlined above in numbered paragraphs 6 and 7 of the section entitled, "DETERMINING WINNERS".

Rules modified on September 3, 2010.

2010 John Reynolds Western Regional Tournament



Tournament Rules

The tournament will be governed under NIRSA Tournament rules with the following modifications.

Format:

Each Women team will play a minimum of 3 games, the winners of each group will move on to Semifinal. No final will be played
Each Men team will play a minimum of 2 games, the winners of each group will move on to Semifinal and finals

The Championship Trophy will go to the winner

The tournament point system:

Win = 3 points

Tie = 1 points

Loss = 0 points

Tie brake:

Forfeits = The winning team is awarded a 3-0 win.

All results and updates will be posted at www.westcoastsoccerassociation.com

Tournament Tiebreakers for Pool Play Only:

1- Head to Head Competition

2- Goals Differential

3- Goal For

4- Goals Against

5 - Penalty Kicks

Tournament Tiebreaker for Semifinals and Finals:

2x 5 minute Golden Goal overtime, if still tied penalty kicks.

Winner is best of 5 kicks unless it is still tied then sudden death.

Game Length – All per NIRSA National Tournament Rules

40- Minutes halves - running clock -

If an opponent is not ready to play 5 minutes after the game clock is started, a forfeit win will be awarded to the opposing team.

7 minute halftime

Each team will provide a game ball.

The visiting team will change kit if color conflict.

A modified tournament format will be used if any of the games have to be postponed or cancelled due to circumstances out of our control (ie the weather).

Yellow cards

Any player receiving 3 yellow cards during the course of the tournament will be ineligible for the team's next game.

Red Cards

Any player receiving a red card during the course of the tournament will be ejected from the game immediately and be asked to leave the vicinity of the playing field, and is ineligible for the team's next game. The referees and/or staff will determine if the carded player's action warrants suspension from the tournament entirely.

Protests are NOT allowed. Any situation not explicitly covered by the rules will be resolved by the Tournament Directors.

Decisions relating to the interpretation of the Tournament Rules can only be made by the WCSA Directors.

Scheduling

Due to travel arrangements of teams, the finals for each division are subject to change

Rosters

Each Team must have signed and notarized a NIRSA eligibility form 30 minutes prior to the first game to directors tent

Roster limit 25 but each team must submit a finalized roster sheet to directors tent prior to first game.

Also a completed roster must be given to field marshall prior to each game.

Game Check In

Each player must present valid Student IDs prior to referee before the start of each game. No ID no play!!

Team Check In

Each team must have all its player must fill out the waiver form 1 hour prior to the first match. These forms can be turned to field marshal

The waiver form can be found at www.westcoastsoccerassociation.com

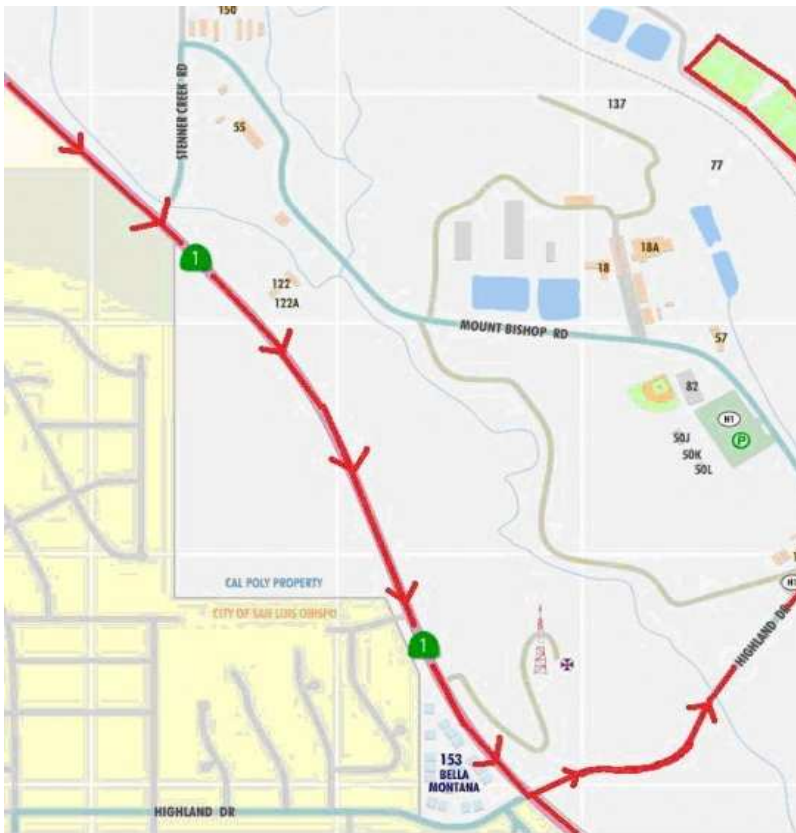


Directions to the field: Can Be Seen at <http://calpolysc.com/direct>

Cal Poly Slo Turf Fields:

- (i) Take HWY 1 CAN/ Santa Rosa St. Exit off Hwy 101
- (ii) Follow Santa Rosa St./Hwy 1 to Highland
- (iii) Turn Right on Highland
- (iv) Follow Highland as it will turn into Via Carta and begin heading towards the baseball stadium
- (v) The baseball stadium will be on your left, park in the lot on your left
- (vi) The fields are to the northwest of the baseball stadium (follow them and you will see the three turf fields)
- (vii) The fields are the ones boxed in red on the map (if you right click on your desktop you can make it bigger)

MAP

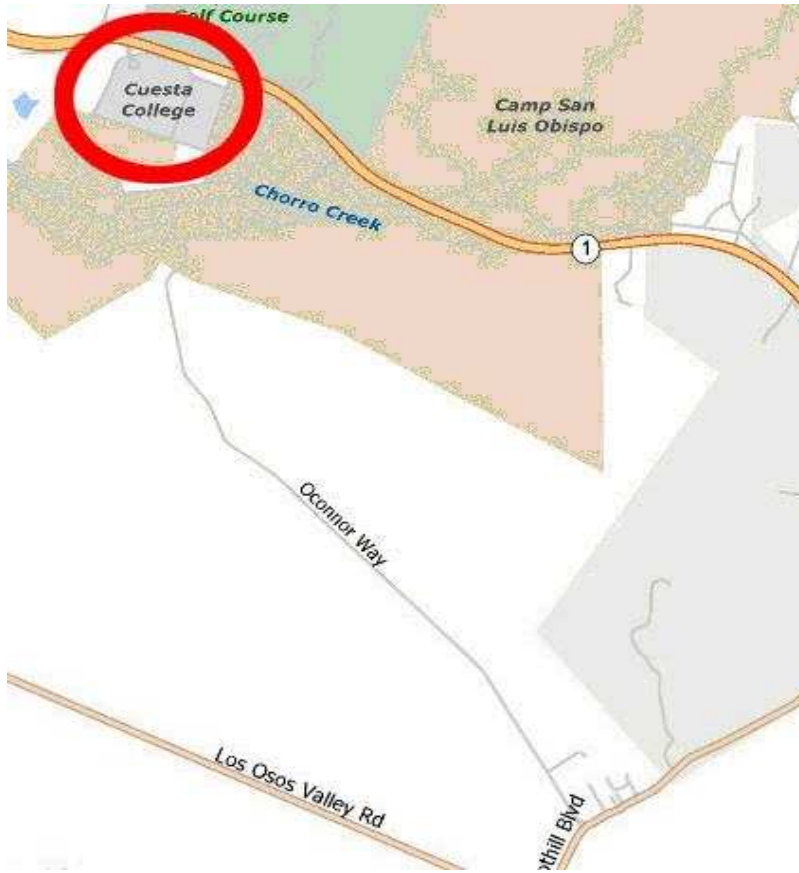


Directions to Cuesta College

- (i) Take the HWY 1 CA-N/Santa Rosa St Exit off Hwy 101
- (ii) Santa Rosa St. turns into HWY 1
- (iii) Follow HWY 1 North for around 6 miles

(iv) Turn Left into the first Cuesta College entrance after Camp San Luis – fields will be the first thing on Campus

MAP



tions

up the hill towards

left next to the baseball

access road and you

mark the map and save it



